
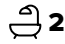

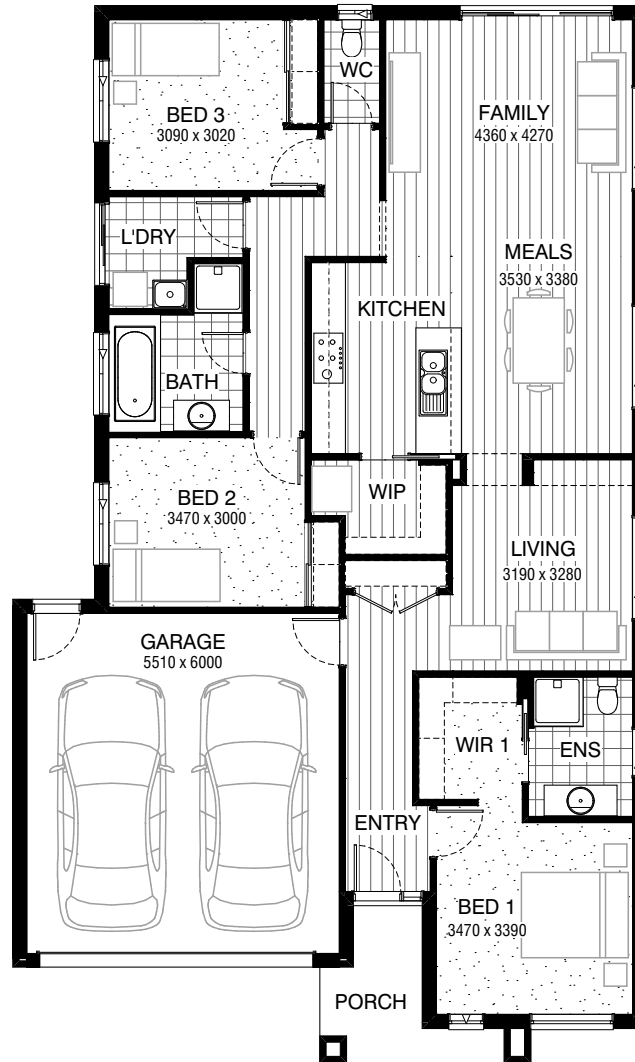


Total squares **19.6sq**

 **3**  **2**  **2**



FLOORPLAN OPTIONS

All available ready-to-go floorplan options for this design can be viewed on the following pages, or visit www.burbank.com.au.

Facades available:

Arkley, Drysdale, Haring	
Overall home width	11.15m
Overall home length	18.59m

Residence	140.0m ²	15.1sq
Garage	36.4m ²	3.9sq
Porch	5.5m ²	0.6sq
Total	181.9m²	19.6sq

Listed details based on Drysdale facade floorplan (illustrated)

*Copyright conditions. All photos and illustrations are representative only. Floor plans and specifications may be varied by Burbank without notice, the dimensions are diagrammatic only and a Building Contract with final drawings will display correct dimensions and detail. All designs are the property of Burbank and must not be used, reproduced, copied or varied, wholly or in part without written permission from an authorised Burbank representative. Copyright Burbank Australia Pty Ltd. ABN 91 007 099 872. Builders Registration Number CDB-U-52603.

Call 13 BURBANK
Visit burbank.com.au

FLOORPLAN OPTIONS



KITCHEN OPTION STANDARD COLOUR BOARD

Provide Kitchen upgrade with 1no. laminated MW. provision and 1no. 900mm base cupboard in lieu of standard 2no. 350mm base cupboards and 1no. 800mm base cupboard.
Option contains standard specification

FLOORPLAN OPTIONS



3



2



2



KITCHEN OPTION UPGRADE COLOUR BOARD

Provide Kitchen upgrade with 1no. laminated MW. provision and 1no. 900mm base cupboard in lieu of standard 2no. 350mm base cupboards and 1no. 800mm base cupboard.
Option provides upgrade specification

FLOORPLAN OPTIONS



3



2



2



ENSUITE OPTION STANDARD COLOUR BOARD

Provide Ensuite Option with 1no. 1200mm x 900mm
polymarble shower base in lieu of standard, 1no. 1582mm wide
vanity unit with 2no. basins and drawer unit.

1no. 1027mm x 850mm aluminium sliding window
in lieu of standard. Increase Ensuite and WIR length
by 220mm and reduce Living accordingly.

Option contains standard specification

FLOORPLAN OPTIONS



3



2



2



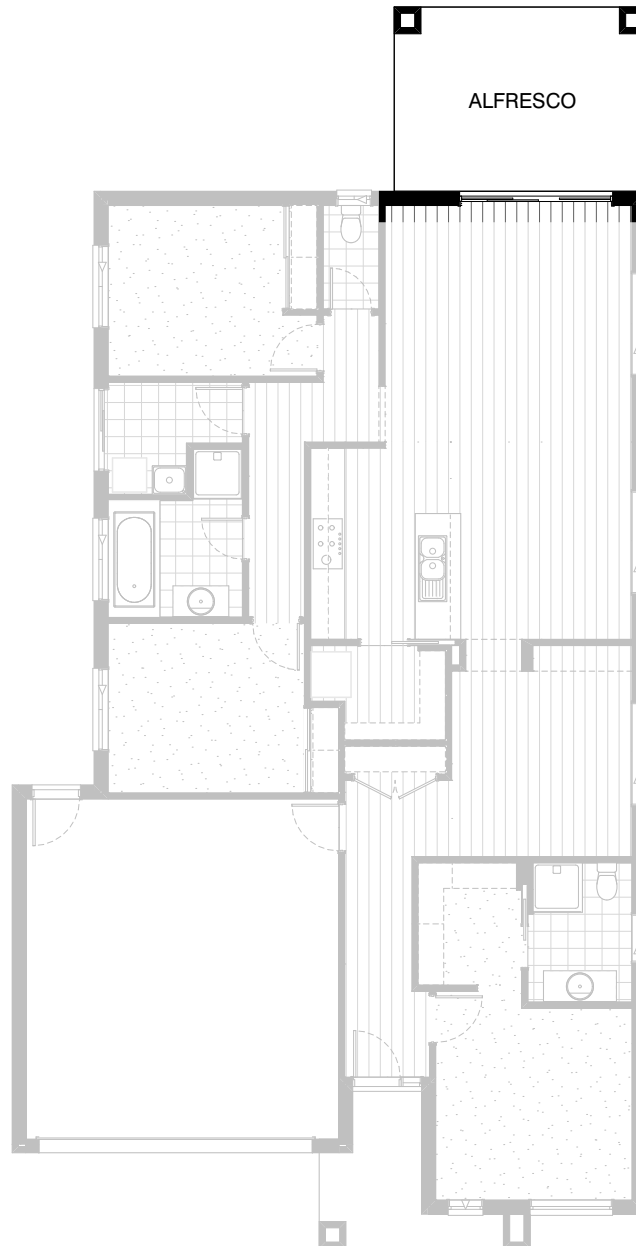
ENSUITE OPTION UPGRADE COLOUR BOARD

Provide Ensuite Option with 1no. 1500mm x 900mm tiled shower base in lieu of standard with tiled niche, 1no. 1482mm wide vanity unit with 2no. basins and drawer unit. 1no. 1027mm x 850mm aluminium sliding window in lieu of standard. Increase Ensuite and WIR length by 220mm and reduce Living accordingly.

Option provides upgrade specification

Option contains standard lighting - Note: This option cannot be selected with ELE-1

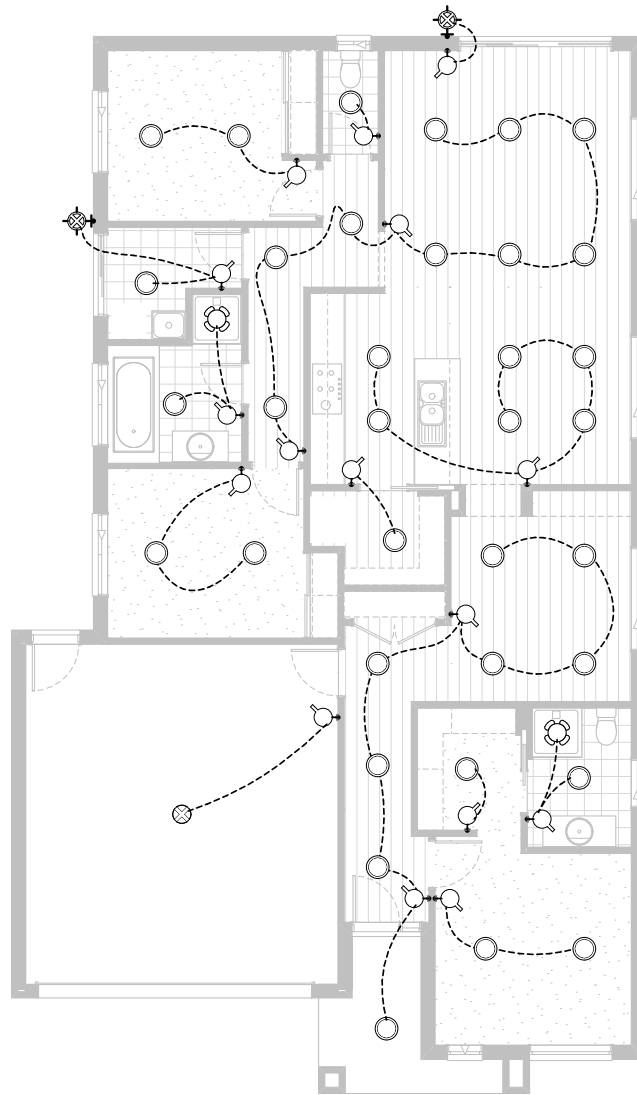
FLOORPLAN OPTIONS



ALFRESCO OPTION

Provide Alfresco to rear of Family with tiled hip roof, structural concrete floor, light point and 2no. 470mm x 470mm brick piers.
Increases area by 14.35m².
Increase length by 3240mm.
Overall width is 4430mm.

FLOORPLAN OPTIONS



Option ELE-1

Provide LED downlight upgrade.